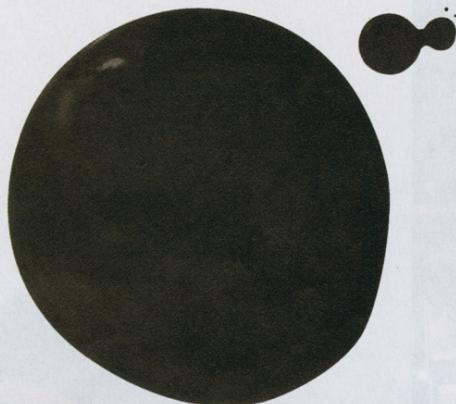




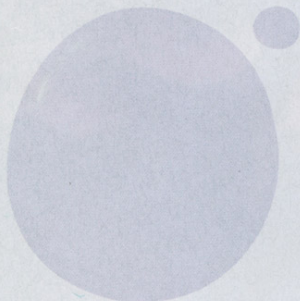
House Beautiful's iPad app—available on iTunes—makes it easy to find the perfect color for any project. A special feature also picks the best complementary colors.



**BLACK FOX SW 7020**  
SHERWIN-WILLIAMS

"Whenever I want to compress a space and make it warmer, I go to a darker color. This brown has a tinge of gray, which brings in some light and gives it a sense of plushness. In my butler's pantry, I paired it with Calacatta Gold marble to create a strong contrast. That gives me the look of an old Dutch painting, which also draws attention away from the imperfect architecture."

**SUSAN FERRIER**



**NOSEGAY 1401**  
BENJAMIN MOORE

"I wanted something different in my living room that would set off my brown sofa. And I have two small children who like to play there, so I wanted it to be cheerful. Lavender happens to be both a color and a neutral, so it's bright and soothing. Mix it with gold, brown, or white to make it more formal. Add purple and blue to make it more fun!"

**NATALIE KRAIEM**



**MARBLE WHITE OC-34**  
BENJAMIN MOORE

"While I love color, I think no color can be the most elegant. Cream, if it's done right, makes a strong and sophisticated statement without trying too hard. This shade was inspired by Deeda Blair's Georgetown living room, painted a rich cream that looked like cashmere on the walls. It has a touch of yellow and gray—I remember her saying that everything needs a hint of gray."

**MARY MCGEE**



**ELEPHANT TUSK OC-8**  
BENJAMIN MOORE

"My mother, the late Betty Sherrill, frequently quipped, 'I like all colors, as long as they are white.' But I think there's some truth in it. And then the problem always is, which white is the right white? This one lets the daylight be itself in a room and becomes golden at night, when lit with candles and—sigh—tungsten bulbs."

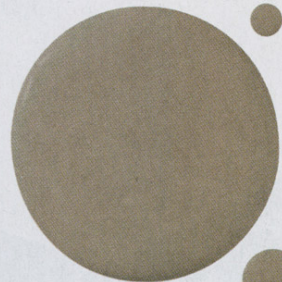
**ANN PYNE**



**REVERE PEWTER HC-172**  
BENJAMIN MOORE

"This is the absolute perfect greige. No need to look any further. And it's amazing with a brighter contrasting trim. I love it so much that I've used it in three of my homes. In light-flooded rooms it feels cool and crisp. In darker, cozier rooms it's very soothing."

**SHAWN HENDERSON**



**BERKSHIRE BEIGE AC-2**  
BENJAMIN MOORE

"I'm a pushover for muted, serene colors, and this gray-brown fits the bill, creating a warm, intimate entry. I like to use a darker color to begin with and then make the rooms radiating out from it lighter, to pull you forward. And I'll usually do the ceiling in the same color as the walls. Otherwise, it feels like too big of a disconnect."

**THAD HAYES**

# COLOR FOYERS

How do you make a dramatic entrance?  
Drench the space in a rich, welcoming hue.

Interviews by  
CHRISTINE PITTEL



"I like to go big and I like to go bold in this transitional space. You're there for just brief moments of the day, so why not take the opportunity to have fun? I'm very into black on the wall right now—sexy, powerful, and as bold as it gets. With a mirror, a brass pendant, and a Moroccan tile floor in coral and white? *Yum.*"

**GENEVIEVE GORDER**  
VALSPAR SIGNATURE  
TUXEDO TIE AR2104



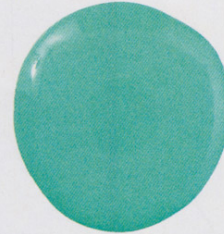
"I always try to give a foyer a little excitement. After all, it's the opening act of the show. I like this color because it reminds me of Milk Duds! Hard to resist, just like a chocolate-colored, mouthwatering room."

**ANTHONY BARATTA**  
PRATT & LAMBERT ACCOLADE  
BLACK COFFEE 3-19



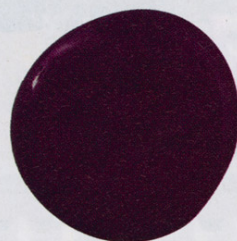
"This is like walking into a bowl of cheer. Do the walls in a shiny finish—but first the surface has to be *smoooooth*, as Bobby Short would say—and then put silver paper on the ceiling, with clear lacquer over it. The furniture would be black and white, on a black-and-white floor—marble or painted. It would be glamorous forever."

**THOMAS BRITT**  
BENJAMIN MOORE ADVANCE  
TROPICANA CABANA 2048-50



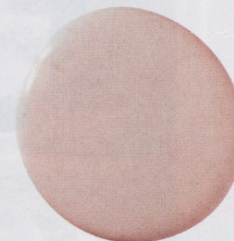
"Like an invitation to a party, a foyer should pique your interest. So I want something that has tons of wow factor, and this tomato red with coral undertones feels exciting and also makes people look good. It gives you a warm, healthy glow. The mirrored wall doubles the drama and reflects the dark chocolate walls in the adjacent dining room."

**TOBI FAIRLEY**  
SHERWIN-WILLIAMS EMERALD  
RED TOMATO SW 6607



"The color of a foyer should be deep, like this red-purple that reminds me of the center of a peony. Then the rooms radiating off from it should be lighter in color, as if the apartment is opening up. But first you have this moment of darkness and mystery, where you can organize yourself before you walk into the spotlight."

**ANN PYNE**  
BENJAMIN MOORE  
REGAL SELECT  
GRAPE JUICE 2074-10



"This is a fleshy pink, which makes it more sophisticated and versatile. With the right lighting, it really glows, and that's such a warm and welcoming way to be introduced to someone's home. Pair it with some strong, slightly masculine pieces to add visual weight. An antiqued brass mirror and a dark wood console would do the trick."

**MONA ROSS BERMAN**  
FARROW & BALL  
ESTATE EMULSION  
PINK GROUND 202